

Introduction

# RSCI - Responsible Supply Chain Initiative

An On-Site Assessment Standard tailored to the Needs of the Automotive Industry



## About RSCI

The RSCI stands for Responsible Supply Chain Initiative. The initiative consist of a group of companies and associations within the automotive sector. The RSCI supports members, suppliers, and stakeholders in the automotive sector and related industries to strive for a more responsible supply chain. To this end, the RSCI will provide tools, measures and general support to its members to fulfil this goal. The Responsible Business Alliance (RBA) has been selected as implementation partner.

The RSCI Program is a standardized assessment and exchange mechanism for verifying the social compliance performance along the automotive supply chain and for mutual recognition of results. It has been developed based on the eeds of the automotive industry with the approach to be more user friendly to small and medium-sized companies that strive for more sustainability in their supply chain, too.

## Benefits



Avoidance of multiple audits



Guidance and support from Assessment Program Manager, providing quality assurance and control



Consistent methodology and tools



Full facility evaluation



## Our mission

Our mission is to support members, suppliers, and stakeholders within the automotive industry and affiliated industries to strive for more responsible supply chains.

### Demands for:

- Humane Labor Conditions
- Sustainable Supply Chains
- Corporate Duty of Care
- Furtherance of Human Rights

## RSCI On-Site Assessments



**RSCI Assessments** are an **integral part of implementing corporate due diligence** in the automotive supply chain. The aim is to further develop sustainability in the industry.



**RSCI Assessments** enable comparable **results that can be shared** by the audited companies on a web-based platform. This is intended to avoid multiple audits.



**RSCI Assessments evaluate the implementation of the social standards** defined in the VDA and DS guiding principles as well as occupational health and safety and environmental protection at the site.



The **RSCI Assessment-Label** confirms that **no indications of fundamental or critical violations** have been identified at the time of assessment, in accordance with the implementation standard.

## How to get an RSCI label

### Step 1

Register on RSCI-Online, establish trading relationships and create facilities that will receive a RSCI-Assessment.

### Step 2

Initiate the RSCI Assessment, define the preferred time window and confirm the payment information.

### Step 3

Sign the Auditee Agreement. A bidding process runs to determine the audit body that will conduct the assessment. The audit body will collaborate with you to schedule the assessment date.

### Step 4

Auditors go on-site, conduct the RSCI Assessment. Within 7-17 working days, the RSCI Assessment Report is released. You determine who has visibility over the report.

### Step 5

In case of deviations, you define the Corrective Action Plan (CAP). Auditor reviews and accepts/ rejects the Plan. After the CAP is accepted, and within 9 months after initial assessment, a follow-up is requested.

**RSCI**  
Full label

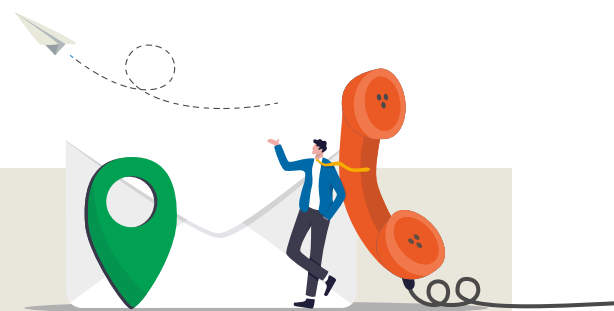


- **No deviations** – RSCI Label valid for 36 months
- **Minor deviations** – RSCI Label valid for 30 months
- **Major deviations** – Interim label valid for 9 months
- **ZT/Critical deviations** – No label

## Contact information

**Pia Hackert**  
RSCI Secretariat, Berlin  
[info@rsci.online](mailto:info@rsci.online)

**Yakut Oktay**  
RSCI Office, Brussels  
[rsci@responsiblebusiness.com](mailto:rsci@responsiblebusiness.com)



Responsible Supply Chain Initiative (RSCI) e.V.  
Behrenstraße 35  
10177 Berlin, Germany

[www.rsci.online](http://www.rsci.online)



Publisher Responsible Supply Chain Initiative (RSCI) e.V.  
Behrenstraße 35, 10117 Berlin  
[www.rsci.online](http://www.rsci.online)

Copyright Responsible Supply Chain Initiative (RSCI) e.V.  
Reprint, also in extracts, is only permitted,  
if the source is stated.

Version August 2023